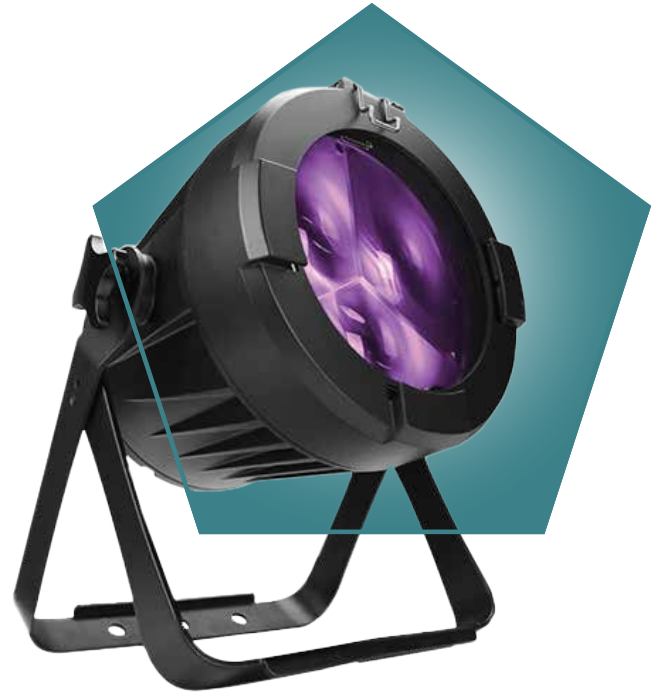


SUPERSTELLAR

◆ PRODUCT INTRODUCTION

SUPERSTELLAR also uses the HSIC color mixing system and combines it with a unique optical design, which allows this fixture to always project one color out of the lens and no more color dot.



◆ PRODUCT PARAMETERS

LIGHT SOURCE	3x 60W multichip RGBW LED's
OPTICS	4,5°-45° electronic zoom
PROTOCOL	DMX512, RDM
DISPLAY	screen for auto and static control
DIMMER & STROBE	0-100%, 0-25 Hz
INPUT VOLTAGE	100-240 VAC, 50-60Hz
MAX. POWER	180W
HOUSING	die-cast aluminum
CERTIFICATION	CE, cETL
DIMENSIONS	250x314x413mm
WEIGHT	8 Kg
WORKING TEMP	-20~45°C
ENVIRONMENT	IP power socket. IP DMX XLR IP65